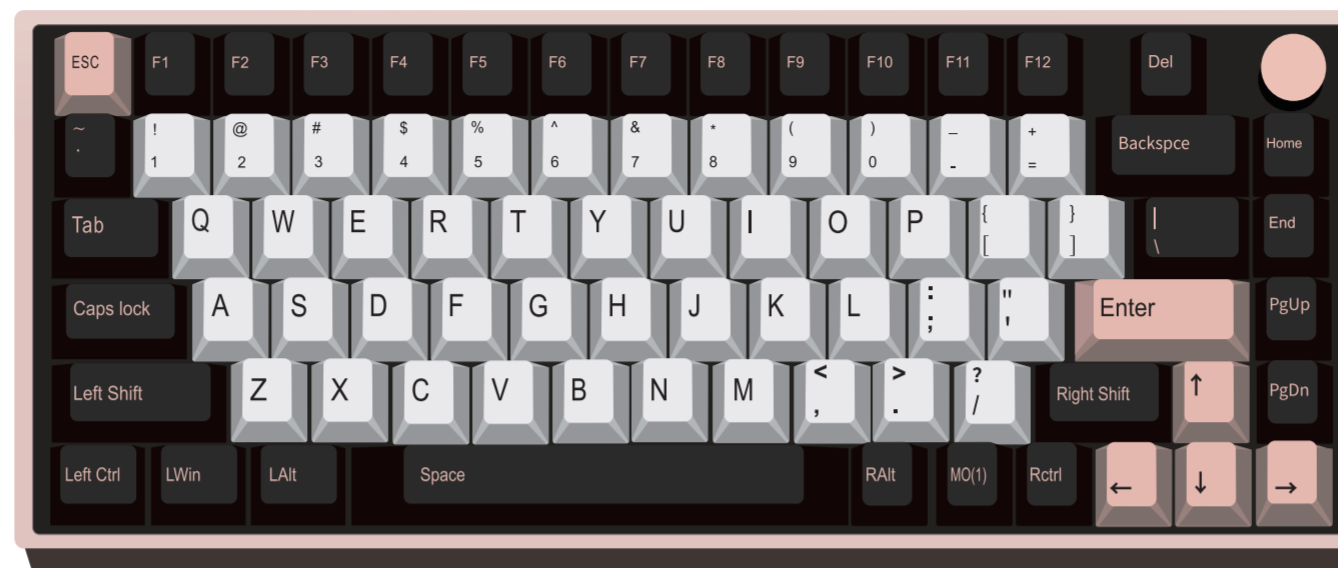


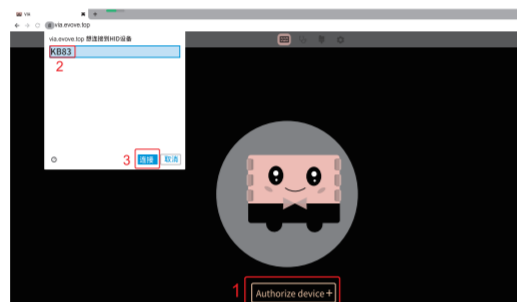
VIA Quick Start Guide



VIA automatic loading device

Open the link in Google Chrome:<https://via.evove.top/>
Make sure the keyboard is in wired mode

1. Click Authorize device
2. Select the device name
3. connect



VIA manual loading device

Open the VIA application

Insert the keyboard and click the following interface to load the user json file
Please refer to the link at the end of the page for the address of this file



After successful loading, the corresponding product model will be displayed



VIA Function Customization

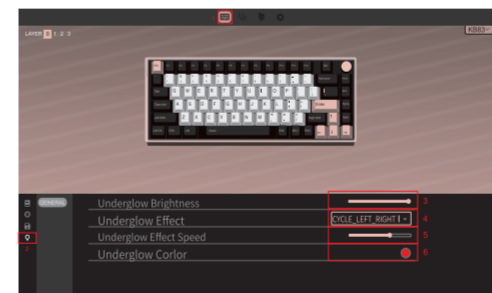
1. Custom key editing steps



According to the numerical order of the red circle in the figure above:

1. Click configure
2. Click keymap
3. Select key function template
4. Select the key to edit
5. Select the desired function key

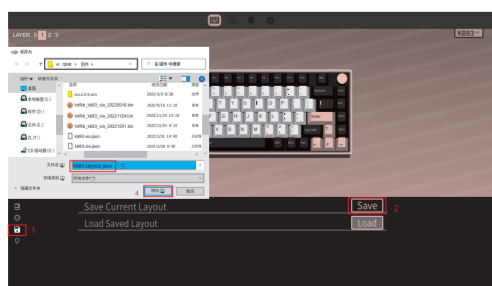
2. Operation steps of backlight effect custom editing



According to the numerical order of the red circle in the figure above:

1. Click configure
2. Click lighting
3. Brightness adjustment of lighting effect
4. Selection of lighting items
5. Speed adjustment of lighting effect
6. Color selection of lighting effect

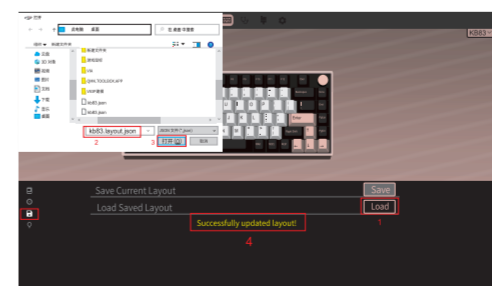
3. After editing the customized keys and backlight effect, save and generate the json file according to the following steps



According to the numerical order of the red circle in the figure above:

1. Click save+load
2. Click save
3. Enter the self-defined software name
4. Click Save to Folder

4. Custom key setting successful operation steps and successful prompt



According to the numerical order of the red circle in the figure above:

1. Click load
2. Select the Json file you just named
3. Click to open
4. Display: Successfully updated layout

Congratulations, the customization is complete; You can save multiple own Jjson files according to the above steps!

If you want to load the default json file, Please log in to the link: www.microcenter.com Search the SKU NO. of the product on the homepage