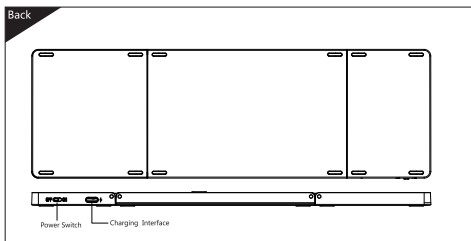
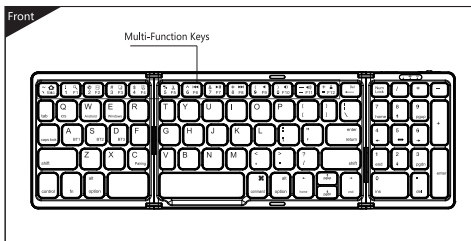


为封面

Foldable Bluetooth Keyboard

User's Manual

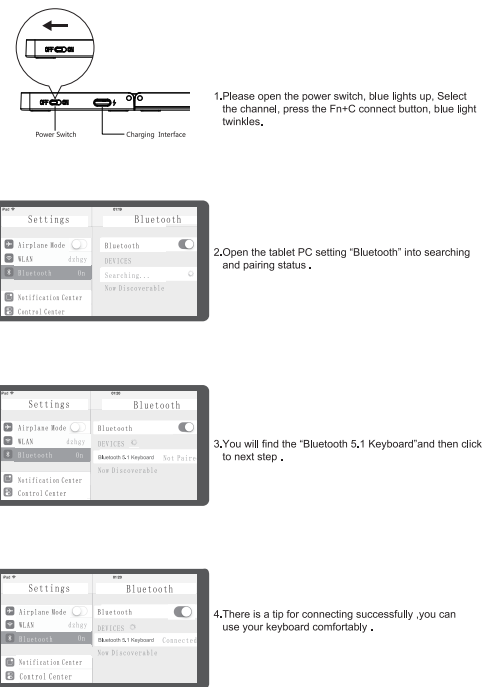
Note: Please read the user manual carefully before you start using this product



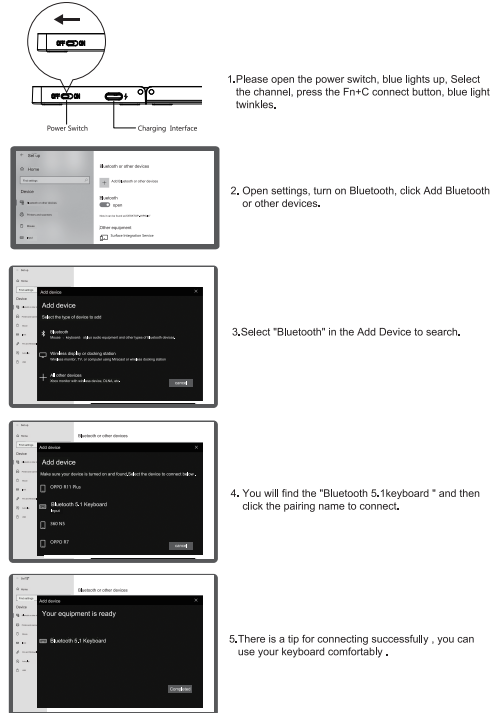
Compatible System

Win /iOS /Android

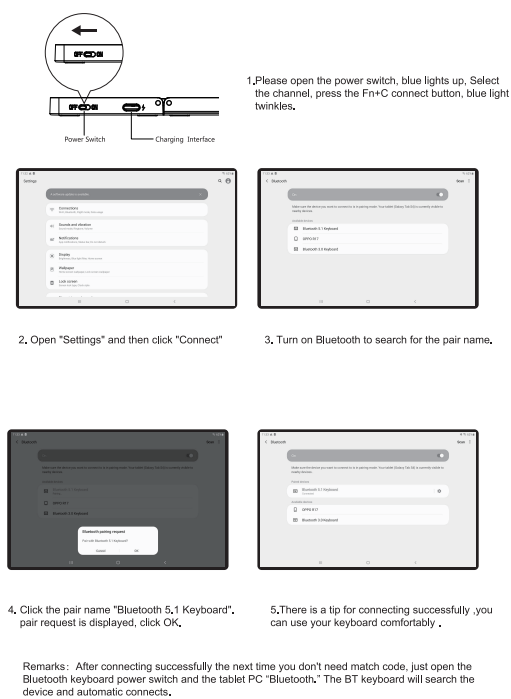
• iOS Connection Instructions:



• Win10 Connection Instructions:



• Android Connection Instructions:



Product features

iOS/Android		Windows		Windows	
Fn+	Corresponding function	Fn+Shift	Corresponding function	Fn+	Corresponding function
~Esc	Return to Desk	~Esc	Home Page	~Esc	Esc
! F1	Search	! F1	Search	! F1	F1
@ F2	Select	@ F2	Select	@ F2	F2
# F3	Copy	# F3	Copy	# F3	F3
\$ F4	Stick	\$ F4	Stick	\$ F4	F4
% F5	Cut	% F5	Cut	% F5	F5
^ F6	Pre-Track	^ F6	Pre-Track	^ F6	F6
& F7	Play/Pause	& F7	Play/Pause	& F7	F7
* F8	Next	* F8	Next	* F8	F8
(F9	Mute	(F9	Mute	(F9	F9
) F10	Volume-) F10	Volume-) F10	F10
_ F11	Volume+	_ F11	Volume+	_ F11	F11
+ F12	lock	+ F12	lock	+ F12	F12

Three system input method switch

iOS: control+ Space key Windows : control+ Shift
Android : control+ Shift

Three system switching languages

iOS : control+Space key switch language
Windows : Alt+Shift switch language
Android : Shift+Space key switch language

Technical Specifications

Keyboard size: 304,31 x 98,12 x 9,86 mm (open)
152 x 98,12 x 19,83 mm (folding)
Key working current: < 3 mA Weight: 218 g
Working distance: 8-10 m Standby current: < 1,0 mA
Lithium battery capacity: 140 mAh Sleep current: < 20 µA
Working voltage: 3.7 V Sleep time: Ten minutes
Charger specifications: 5V---1A or 2A Awaken way : Press key

Status Display LED

- Connect : Open the power switch, blue lights up, press the connect button,blue light twinkles.
- Charging : Indicator light will be on red, after fully charging, the light crush out.
- Low Voltage Indication : When the voltage is below 3.3 V, blue light twinkles.

Multi-channel connection

- When connecting the first device, first press Fn+ BT1 and then press Fn+C to start the connection.
- Before connecting the second device, press Fn+ BT2 once, then press Fn+C to start the connection.
- Before connecting the third device, press Fn+ BT3 once, then press Fn+C to start the connection.
- To use multiple devices at the same time, press Fn + BT1 / BT2 / BT3 to switch to the connected devices freely .

Troubleshooting

Please contact the after-sales service.

Copyright

It is forbidden to reproduce any part of this manual without the permission of seller.

Safety instructions

Do not open or repair this device, Do not use the device in a damp environment. Clean the device with a dry cloth.

Warranty

The device is provided with one-year limited hardware warranty from the purchase day.

Keyboard Maintenance

- Please keep the keyboard away from liquid or humid environment, saunas, swimming pool, steam room and don't let the keyboard get wet in the rain.
- Please don't expose the keyboard at too high or too low temperature condition.
- Please don't put keyboard under sun for a long time.
- Please don't put keyboard close to the flame, such as cooking stoves, candles or fireplace.
- Avoid sharp objects scratching products, timely to recharge products to ensure the normal use.

FAQ

- The tablet PC can't connect the BT keyboard?
1) At first check the BT keyboard is into match code state, then open the table PC Bluetooth searching.
2) Checking the BT keyboard Battery is enough, the battery low is also lead to can't connect, you need charge.
- The keyboard indication light always flashing when use?
Keyboard indication always flashing when use, is means the keyboard will be no power ,please charge the power as soon as possible.
- The table PC display BT keyboard is disconnect?
The Bluetooth keyboard is not used for a period of time, the device will automatically enter the sleep state in order to save power. Press any key on the keyboard to wake up, and the Bluetooth connection will be automatically restored.

Warranty Card

User information

Company or personage full name

Contact address

TEL Zip

The purchased product name and model NO.

Purchased date

This reason due to the product broken and damage is not include on the warranty.
(1) accidents, misuse, improper operation, or any unauthorized maintenance, alteration, or disassembly.
(2) Improper operation or maintenance, violation of product instructions or improper connection of power during use.
(3) Or use consumables (such as spare batteries) that are not provided by the company but applicable laws Except where such restrictions are prohibited.



成品尺寸：71X105mm

材质：100g双胶纸

风琴折