

ATARI®

ULTIMATE FIGHT STICK Quick-Start Guide



INCLUDES RASPBERRY PI & OVER 140 ATARI GAMES!



FOR
Raspberry Pi®

3B/3B+/3A+

WELCOME!

This guide will get you up and running quickly with your new Ultimate Atari Fight Stick.

What is in the Box:

- ❑ Ultimate Atari Fight Stick
- ❑ Atari Games Micro SD Card (Pre-Installed in Raspberry Pi)
- ❑ Raspberry Pi 3B+
- ❑ 6' HDMI Cable
- ❑ Raspberry Pi Micro USB Power Supply
- ❑ This Quick Start Guide

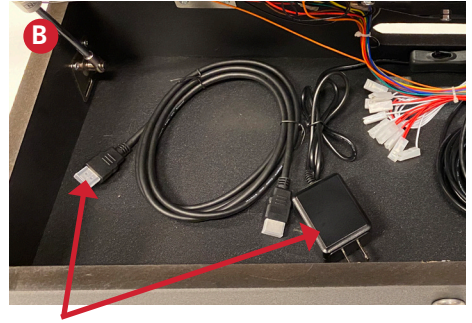
What You Need to do to Get Up and Running: (See Photos A-D)

- ✓ Connect the Raspberry Pi to an HDTV with an available HDMI port
- ✓ You will need to have internet connected to the Raspberry Pi via Ethernet cable or WiFi. If you choose WiFi, the initial start up screens will guide you through the process of connecting to your home WiFi. (If wanting to use ethernet connection, you will need to run the ethernet cable into the cabinet to the Raspberry Pi) (See Photo E)

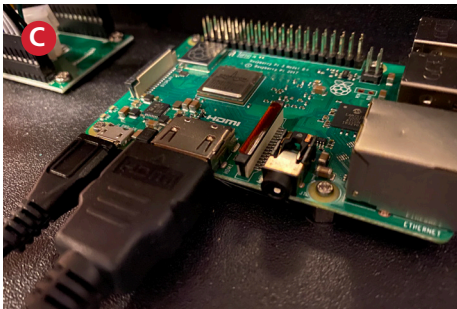
Step 1: Connect the Atari Ultimate Fight Stick to Power, and to your TV.
(Optional Ethernet Internet Connection)



A: Unlock the cabinet with the enclosed key.



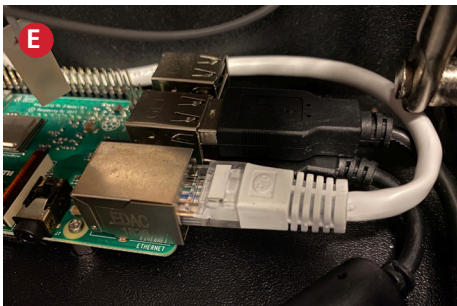
B: Open cabinet to access the HDMI cable and the power adapter plug.



C: Plug one end of the HDMI cable into the Raspberry Pi.



D: Run both the other end of the HDMI cable and power cable through the back of the cabinet. Plug the HDMI into your TV and power plug into an outlet.



E: If you would like to connect an ethernet cable to the Raspberry Pi for the internet connection here is where you would plug it in.

Note: Remember to lock the cover after closing it.

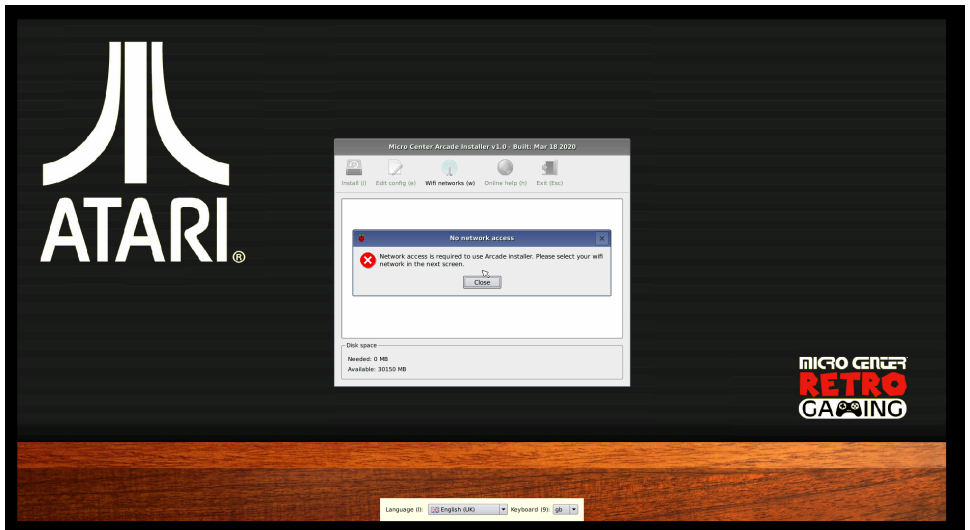
Step 2: Power up your Atari Ultimate Fight stick!



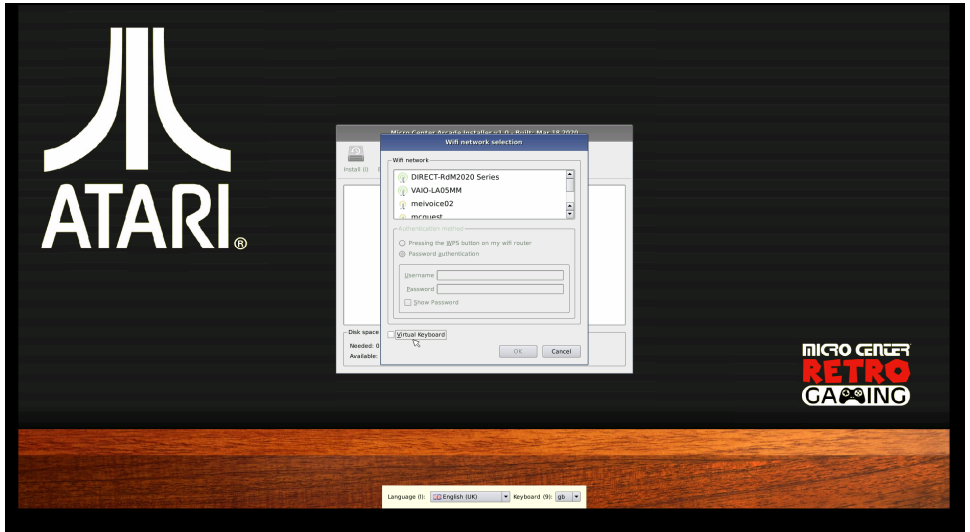
F: To power up the fight stick there is a toggle switch located on the back of the cabinet just inside the opening.

Step 3: Upon first boot, you will be presented with a menu and asked to connect your WiFi. (Note: If you are connected to the internet via an Ethernet cable, please move to Step 5).

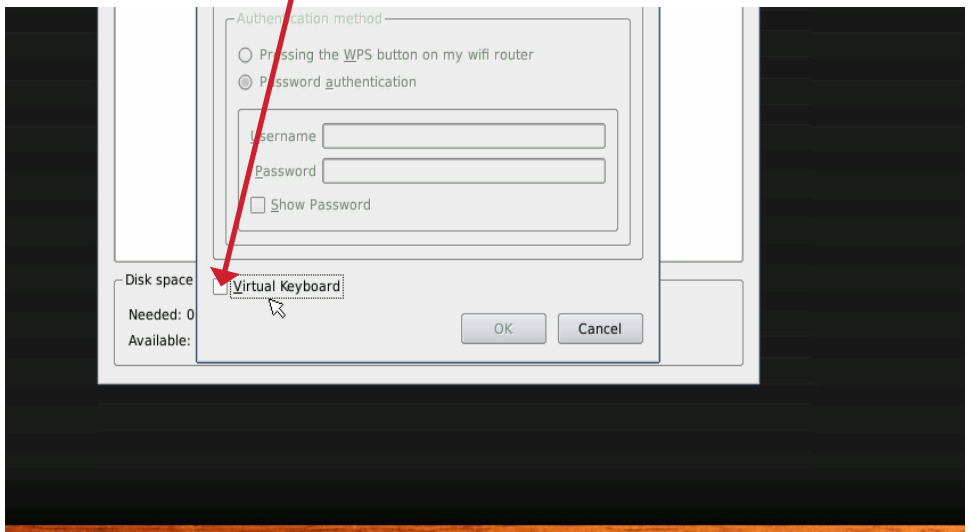
Tip: Nothing showing up on your monitor? Make sure to select the appropriate HDMI input on your TV or computer monitor.



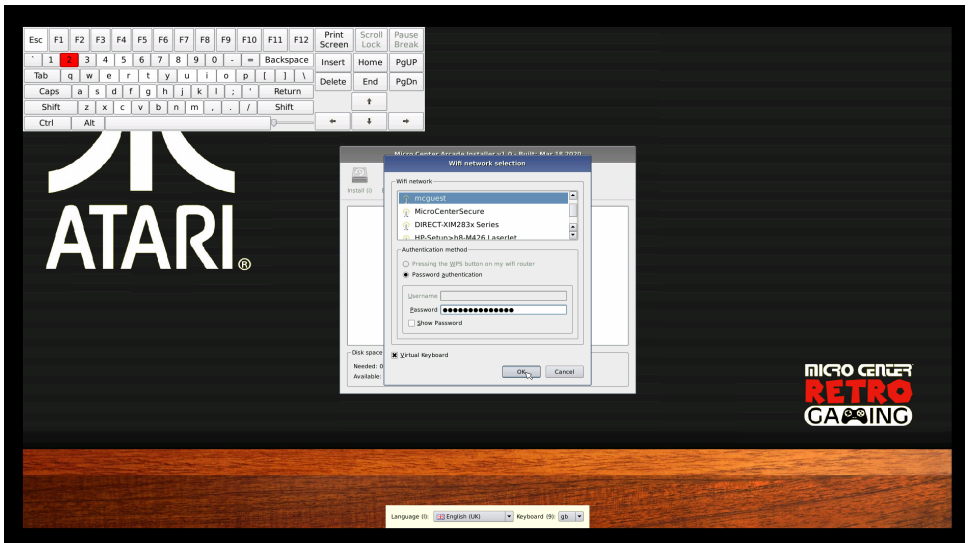
Once you hit the "OK" button, you will see the WiFi connection window.



Tip: Make sure you click the box to activate the Virtual Keyboard.



Step 4: Use the joystick and the buttons to navigate the on screen prompts.

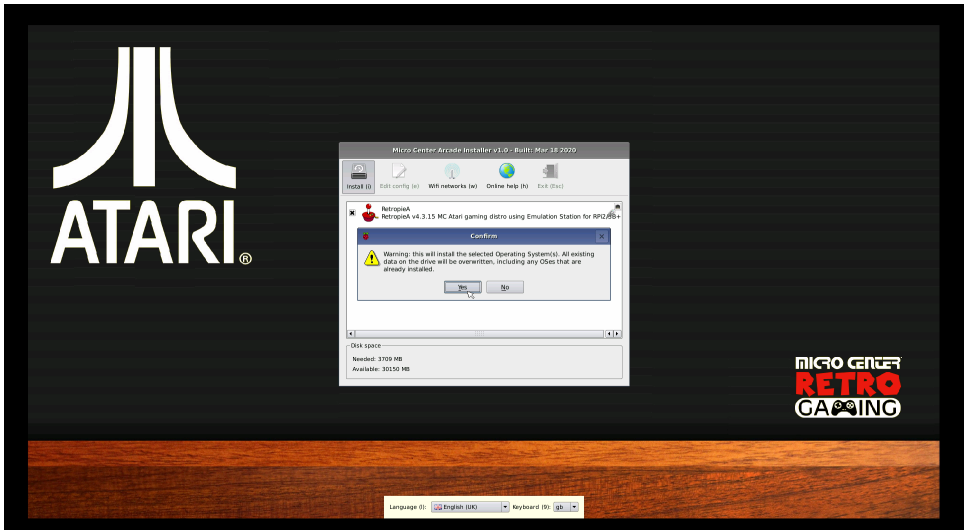
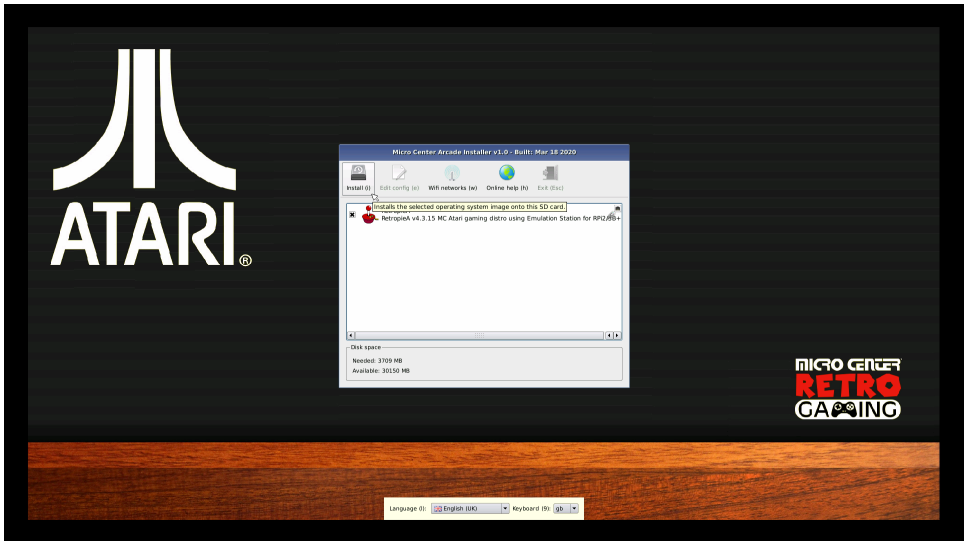


Use the **JOYSTICK**
to move the mouse

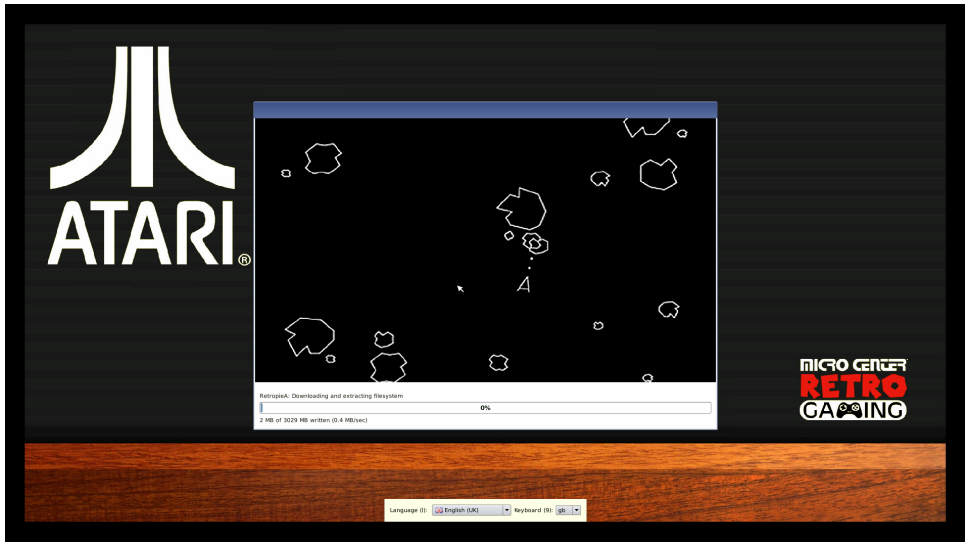


Use **RIGHT TOP & BOTTOM BUTTONS**
to select options

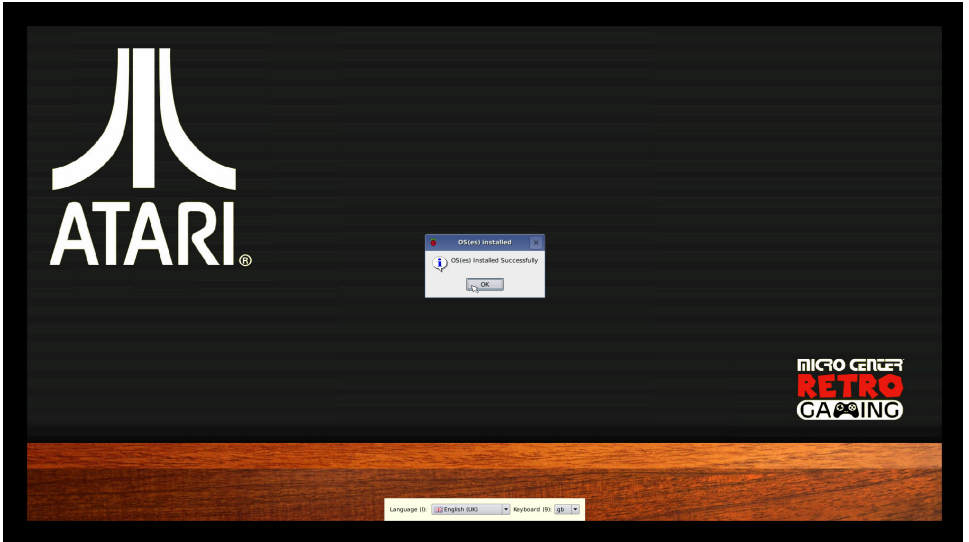
Step 5: Next, using the Joystick and Buttons, click the check box to install the Atari RetroPie program, and then select the "INSTALL" button and then select "YES" to begin the installation. (Use the right most top and bottom buttons on the fightstick).



Step 6: Next, the most up to date Atari game image will be downloaded to your Raspberry Pi. Depending on your internet connection this could take between 10-30 minutes.



Step 7: Once the upload is complete click the "OK" button and your Raspberry Pi will reboot.



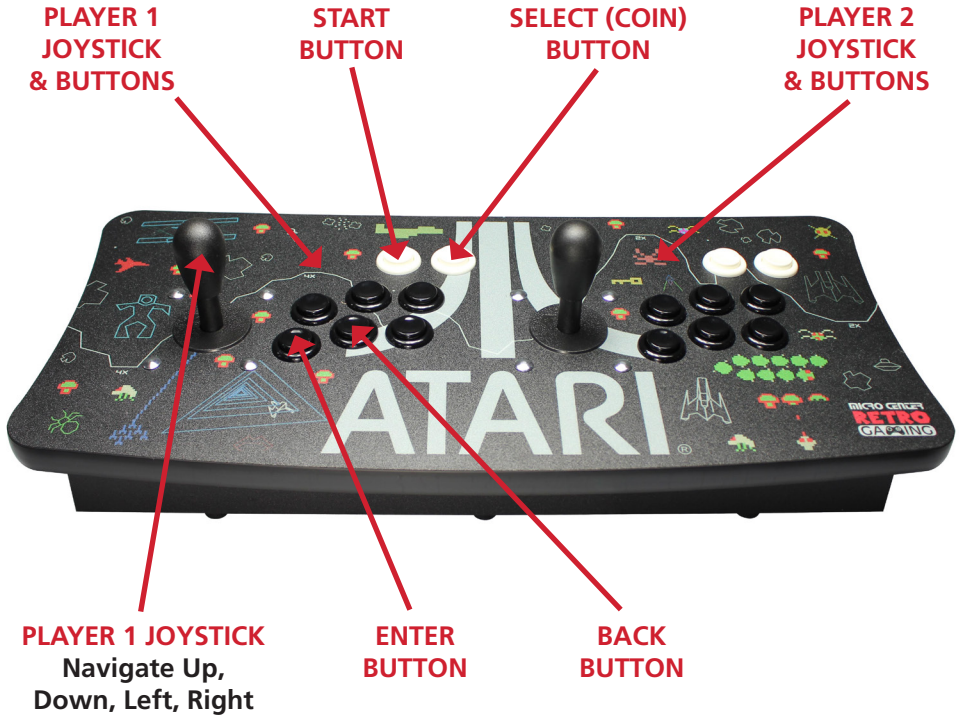
Step 8: Once your Raspberry Pi starts to reboot, you will see a screen like this.



When loading is complete you will see the following screen.



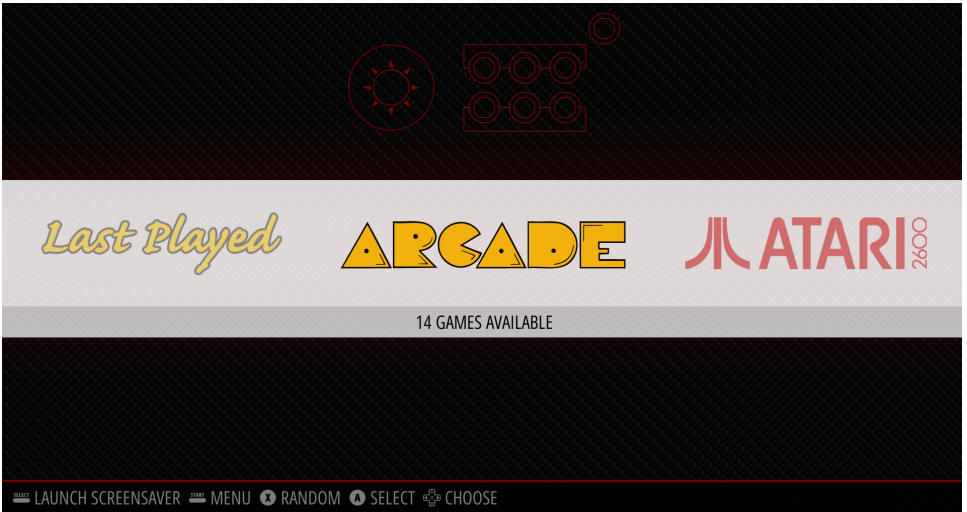
Step 9: Understanding how to navigate menu interface with the Atari Ultimate Fight Stick.



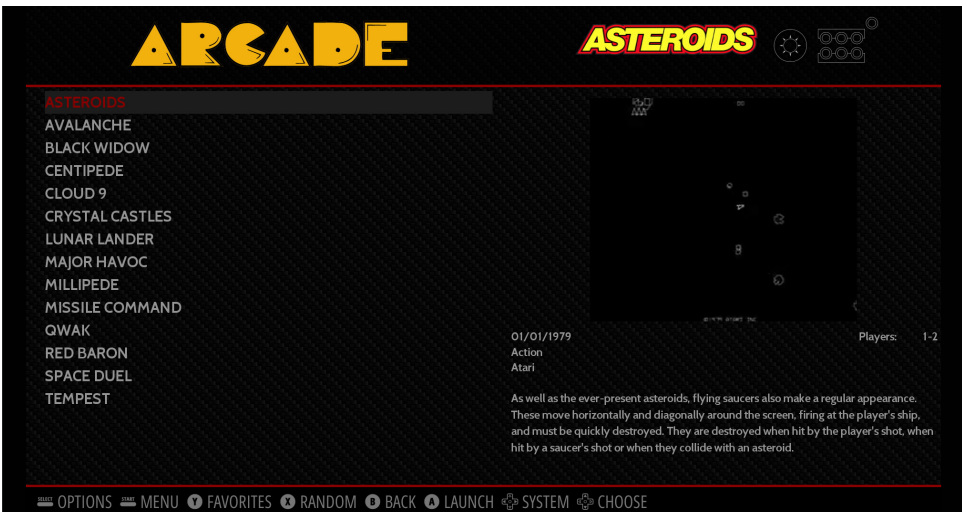
Note: If you would like to reconfigure the buttons on the fightstick you can do this via the Main Menu by hitting the "Start" button on this screen.



Step 10: Selecting a game platform and choosing a game to play.
In this example, Arcade Games will be used.



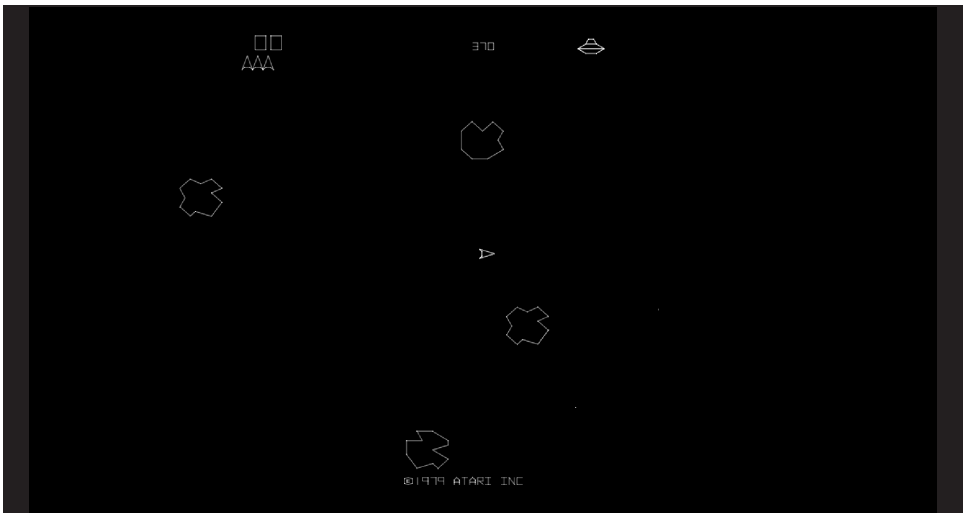
Have the game platform in the center and then press the "Enter" button (Bottom Left). The next screen you will see is this game listing screen.



Each game will also have a preview and a short description of the game. Once you select a game the loading screen will appear.



The next screen you will see is the actual game.



Exiting Games:

To exit out of any game simultaneously press the white start and select buttons.

START & SELECT BUTTONS
Press both to return to
main menu from any game.



Proper Procedure for Raspberry Pi Shutdown:

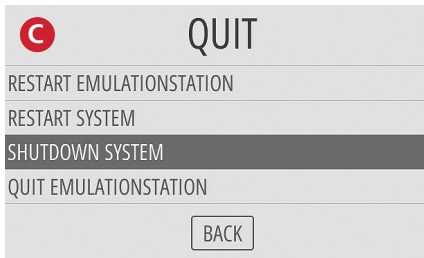
Since the Raspberry Pi is a full fledged computer, it is important that you shutdown properly or you may corrupt the operating system.



A: Press the start button on your controller.



B: This will bring up the main menu. Select quit.

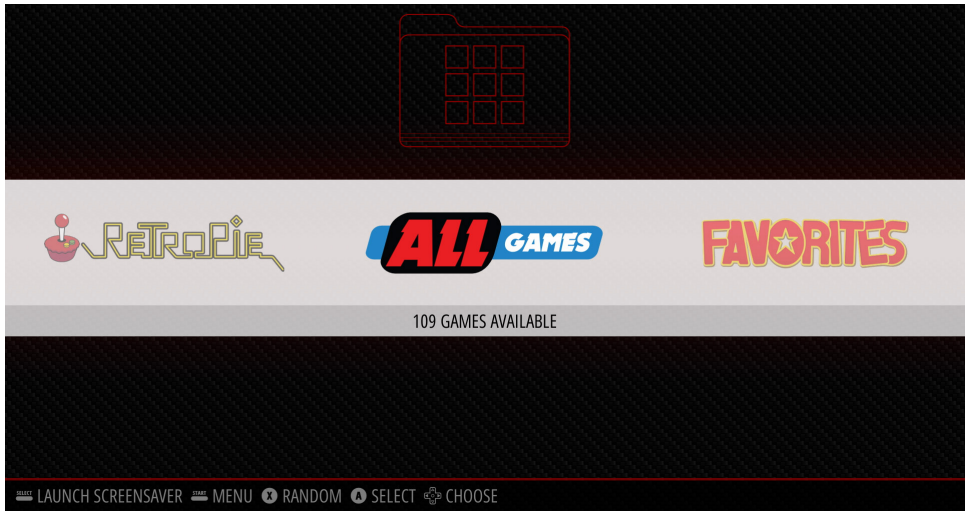


C: Select shutdown system. Wait 10 seconds and turn power switch off.

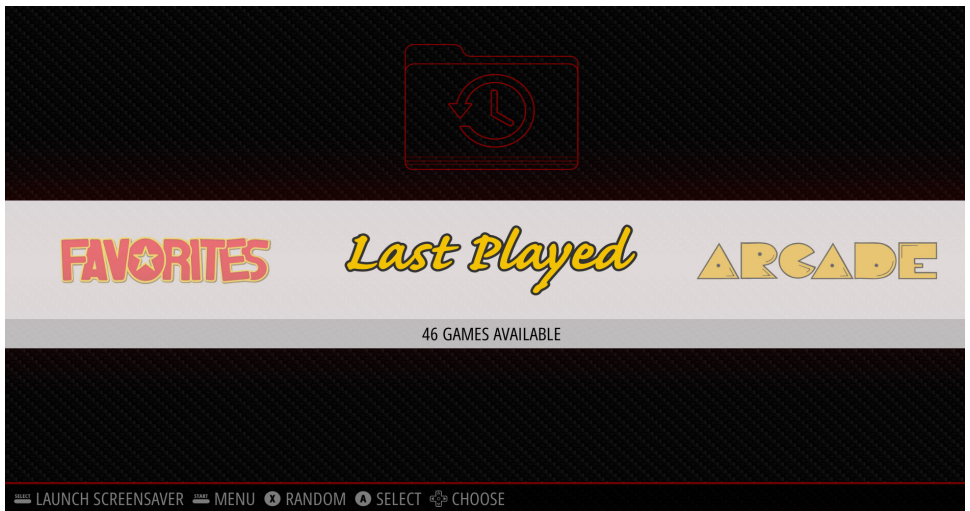
Important Tips and Suggestions for Playing Any of the Games:

1. Each game may have different controller button configurations. They will vary by platform and by game with many not being the same. You will need to load a game and then determine what buttons do what (i.e. start the game, select # of players, shoot, jump, etc...)
2. There are many resources on the internet that can help with game controller information such as: retropie.org.
3. There are advanced ways of custom mapping the controller buttons a specific way the user wants. There are many resources on the Internet to help with this.

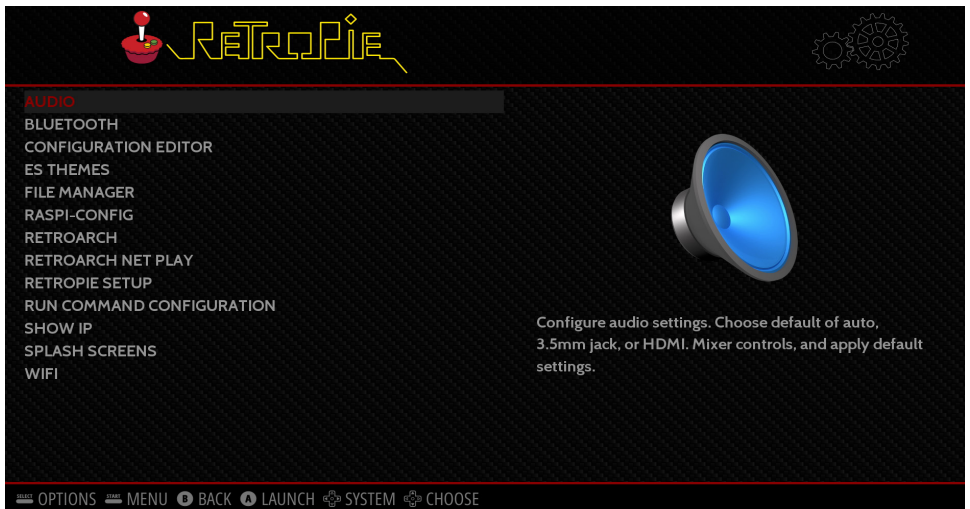
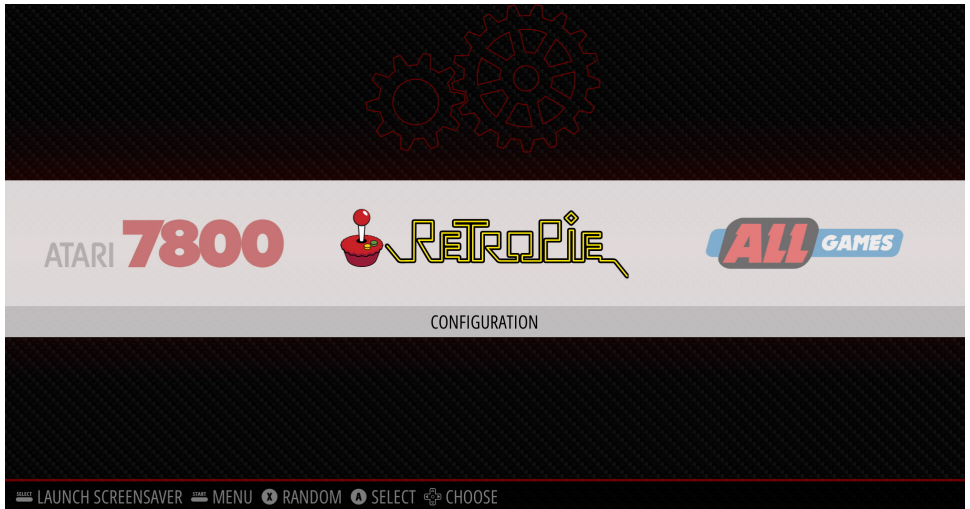
There are a couple of additional ways to access the games. The all games menu will show you all the games available by platform in one menu.



The “Last Played” option will list the previous games that were played in order of when they were played.



The retroPie menu has advanced configuration settings. For more information about these settings and how to use them, please visit retropie.org.



For Specific Game Play Instructions for Atari 2600, Please Visit:

https://atariage.com/system_items.php?SystemID=2600&itemTypeID=MANUAL

For Specific Game Play Instructions for Atari 7800, Please Visit:

https://atariage.com/system_items.php?SystemID=7800&ItemTypeID=MANUAL

Where to Get Updates & More Information:

Since the Raspberry Pi eco system is always evolving to bigger and better things, you should periodically head over to microcenter.com/pi to get the latest information about programming the Raspberry Pi.

To learn more about the Raspberry Pi, you can also head over to the Raspberry Pi foundation website at raspberrypi.org.

More advanced information on RetroPie can be found at retroPie.org.

Where to Get Help:

If you need help, we are always here for you! Don't hesitate to stop by one of our stores which can be found across the United States. You can also chat online or email us directly through the Micro Center website at microcenter.com.

Did you know you can also call our technical support team at **614-850-3670**. Please make sure to have your purchase information available prior to calling so we can better answer your questions.



Tech Support Hours of Operation:

Monday - Friday, 9am to Midnight EDT

Saturday, 10am to Midnight EDT

Sunday, 11am to 9pm EDT

(Excluding posted holiday hours)

